

Telecom Fuses

FUSES FOR DC (Direct Current) APPLICATIONS -

ETI solution for TELECOM Power Supply Circuits

ETI d.d. developed specially designed fuse-links for short circuit protection of d.c. telecom power supplies. They are typically installed into rectifier outputs, battery feeders or d.c. power distribution for protection of the load circuits.

All their characteristics are optimized to correspond to the operating conditions of telecom power supply equipment. Power dissipations and switching voltage provide optimal function and protection of telecom power supplies. The ETI TELECOM NH00 fuse-link is a high breaking capacity current limiting fuse-link with pure silver, age-resistant melting element.

NH DC 80 V - Telecom fuse

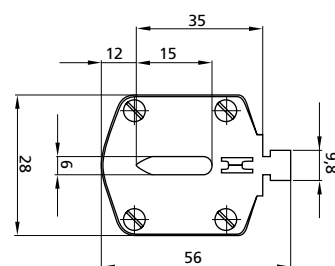
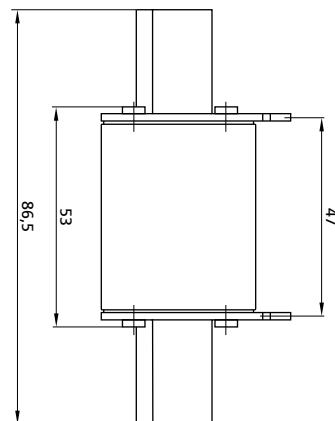
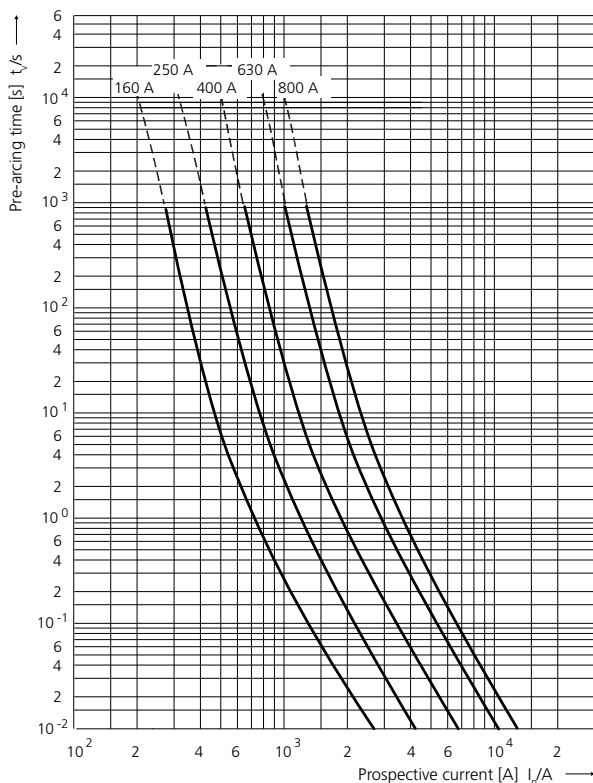
General characteristics	
Rated voltage	80 V d.c. (L/R = 20 ms)
Breaking capacity	25 kA d.c.
Standards	IEC 60269-1
Application	Fuse-link for battery and UPS protection. For installation in NV Telecom fuse disconnecter.

NH DC 80 V - Telecom fuse						
Size	I _n [A]	Code No.		Power dissipation [W]	Packaging [pcs]	Weight [g]
		standard indicator	striker indicator			
00	160	004110106	004110101	9,0	3/90	173
	200	004110120	004110119	10,5		
	250	004110107	004110102	12,5		
	400	004110108	004110103	17,5		
	630	004110109	004110104	28,0		
	800	004110110	004110105	37,5		



Special Purpose Fuses

Time-current characteristics



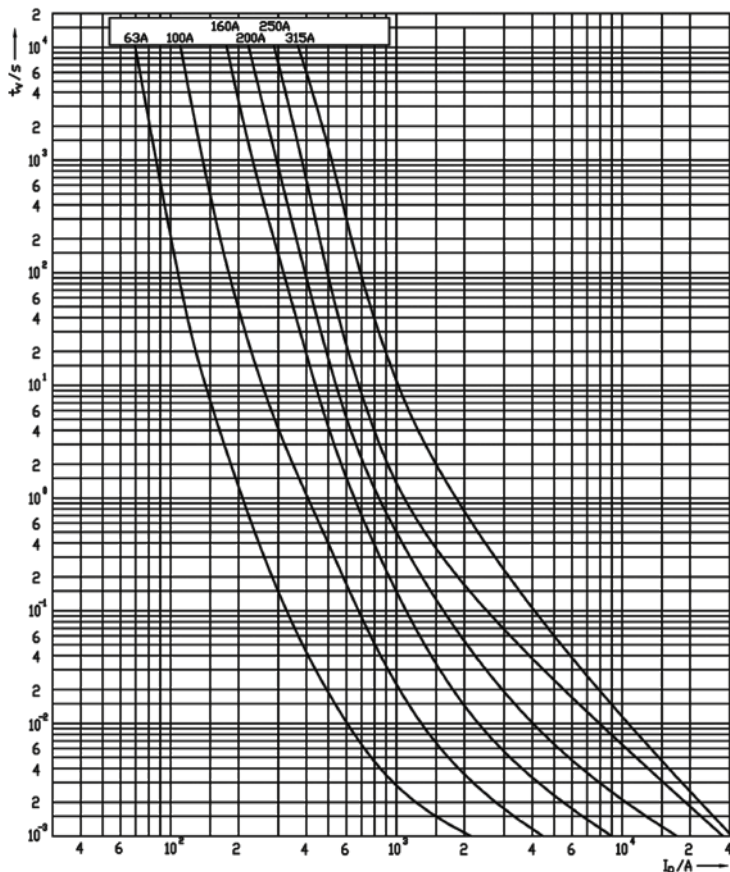
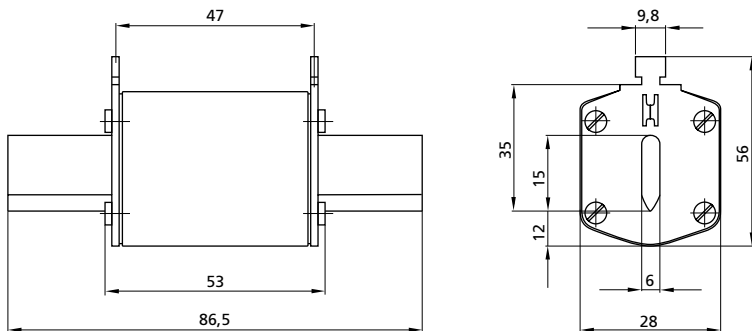
NH DC 250 V

General characteristics

Rated voltage	250 V d.c. (L/R = 20 ms)
Breaking capacity	25 kA d.c.
Standards	IEC 60269-1
Application	Fuse-link for DC application. For installation in NV Telecom fuse disconnecter.

NH DC 250 V

Size	I_n [A]	Code No.		Power dissipation [W]	Packaging [pcs]	Weight [g]
		standard indicator	striker indicator			
00	63	004110130	004110135	7,5	3	654
	100	004110131	004110136	8,6		
	160	004110132	004110137	13,8		
	200	004110140	004110141	18,5		
	250	004110133	004110138	21,2		
	315	004110134	004110139	24,0		

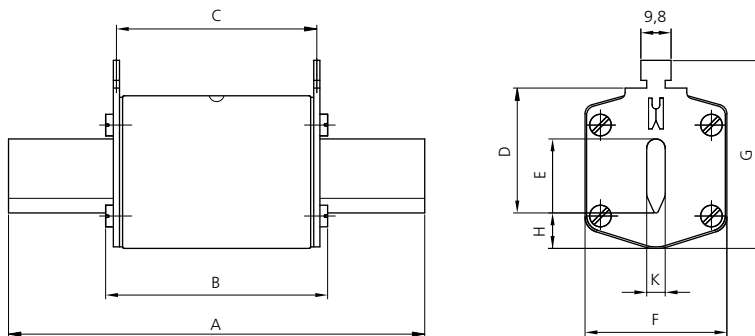


NH DC 440 V

General characteristics	
Rated voltage	440 V d.c. (L/R = 20 ms)
Breaking capacity	50 kA d.c.
Standards	IEC 60269-1
Application	Fuse-link for DC application. Installation in PK or PT fuse bases.



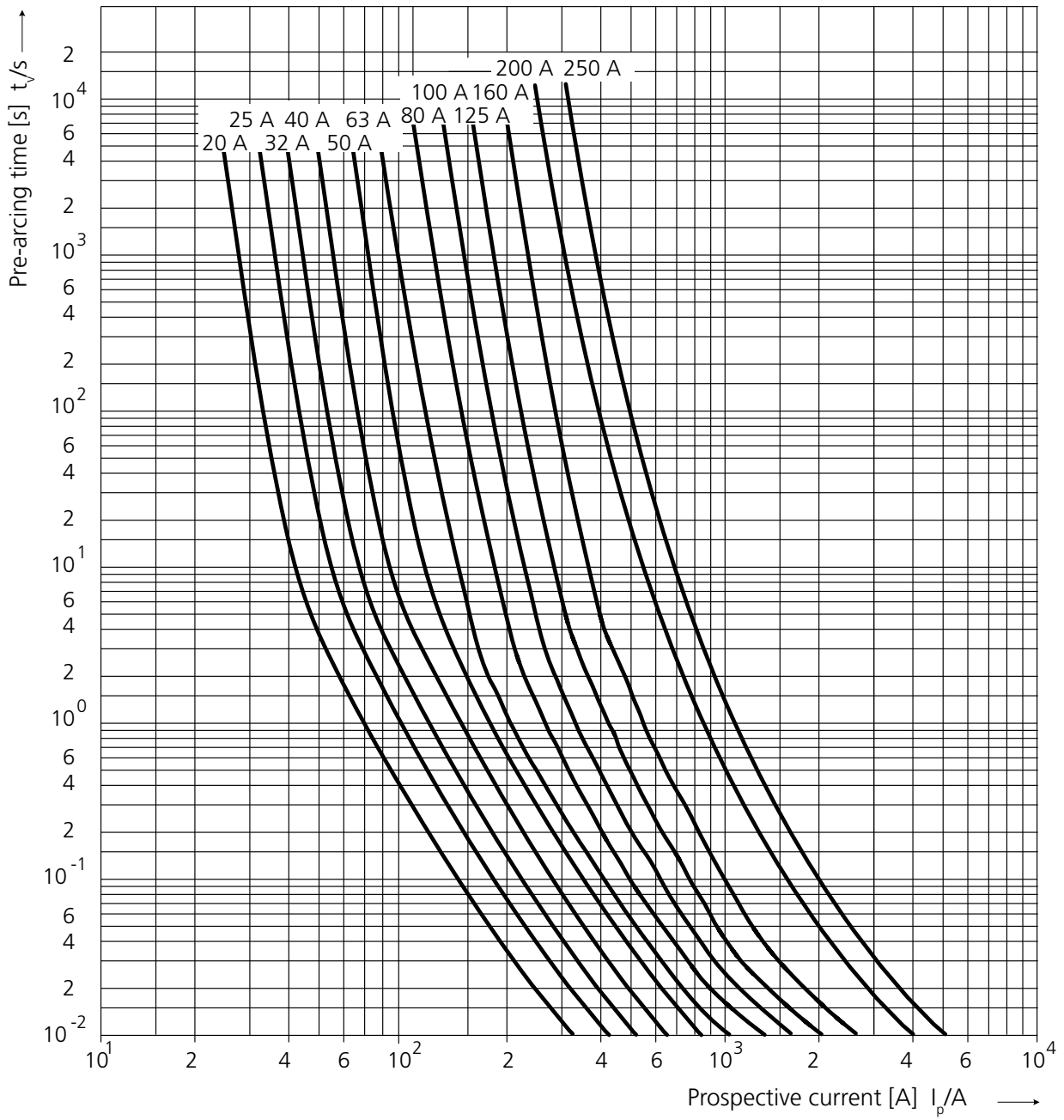
NH DC 440 V							
Size	I_n [A]	Code No.	Power dissipation [W]	Pre-arcing Joule integral (I ² t)	Operating Joule integral (I ² t)	Packaging [pcs]	Weight [g]
00C	20	004110200	5,3	360	648	3/120	125
	25	004110201	6,4	710	1.278		
	32	004110202	7,6	920	1.656		
	40	004110203	9,4	1.440	2.592		
	50	004110204	11,3	2.820	5.076		
00	63	004110210	11,9	4.160	7.488	3/90	173
	80	004110211	10,6	4.670	8.406		
	100	004110212	12,2	9.360	16.848		
	125	004110213	15,3	14.750	26.550		
	160	004110214	17,1	27.880	50.184		
1C	20	004110220	6,1	360	648	3/45	233
	25	004110221	7,9	710	1.278		
	32	004110222	8,9	920	1.656		
	40	004110223	12,0	1.440	2.592		
	50	004110224	14,8	2.820	5.076		
	63	004110225	16,0	4.160	7.488		
	80	004110226	11,7	4.670	8.406		
	100	004110227	13,0	9.360	16.848		
	125	004110228	15,5	14.750	26.550		
1	200	004110230	27,5	41.990	75.582	3/24	430
	250	004110231	31,5	81.000	145.800		



type	dimensions [mm]									
	A	B	C	D	E	F	G	H	K	
00 C	79	53	47	35	15	21	52	7,5	6	
00	79	53	47	35	15	28	56	12	6	
1 C	135	68	65	40	15	28	61	12	6	
1	135	72	65	40	20	46	65	14	6	



Time-current characteristics



NH DC 1000 V aR

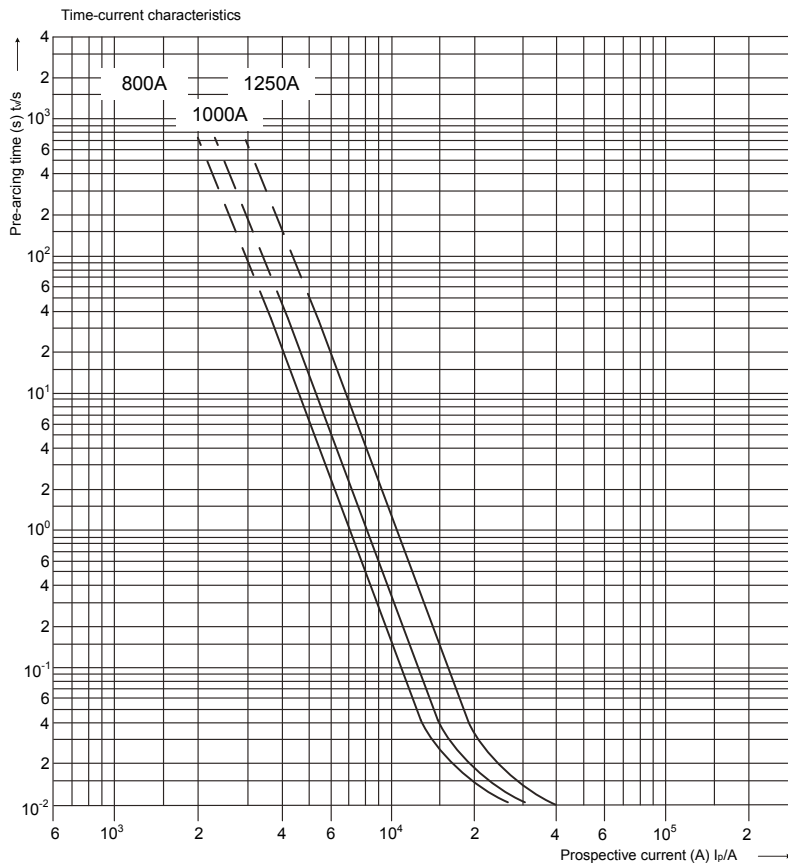
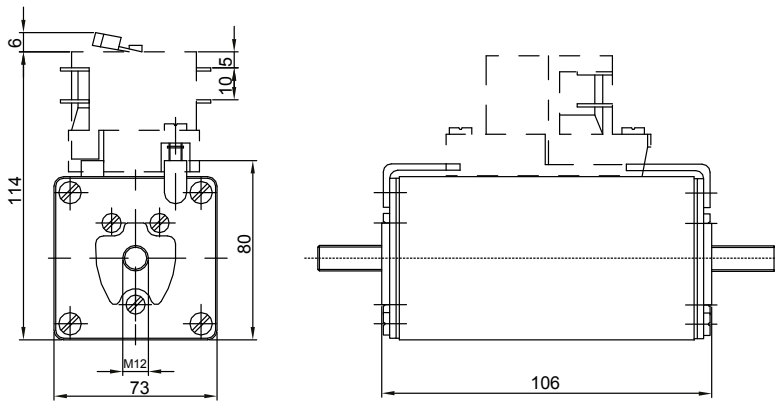


General characteristics	
Rated voltage	1000V d.c. (L/R=1ms)
Breaking capacity	30 kA d.c.
Standards	IEC 60269-4
Application	Fuse-link for DC application. Installation directly on copper rails.



NH DC 1000 V aR							
Size	I_n [A]	Type with center trip indicator for microswitch MK	Power dissipation [W]	Pre-arcing Joule integral (I^2t) L/R=1ms	Operating Joule integral (I^2t) L/R=1ms	Packaging [pcs]	Weight [g]
3L	800	004305636	139	500.000	1.000.000	1	1500
	1000	004305637	154	900.000	1.600.000		
	1250	004305635	201	1.500.000	3.000.000		

Note: microswitch MK and adapter AMK2 must be ordered separately



NH DC 1100 V aR



General characteristics	
Rated voltage	1100V d.c. (L/R=10ms)
Breaking capacity	70kA d.c.
Characteristics	aR
Standards	IEC 60269-4
Application	Fuse link for battery charger.



NH DC 1100 V aR							
Size	I_n [A]	U-170mm screw contact	Power dissipation [W]	Pre-arcing Joule integral (I^2t) L/R=1ms	Operating Joule integral (I^2t) L/R=1ms	Packaging [pcs]	Weight [g]
3L	710	004725339	81	160.000	700.000	1/9	1970

Time-current characteristics

